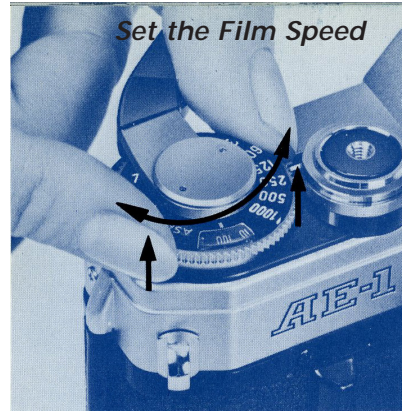


## Setting the Film Speed and Using the Meter.

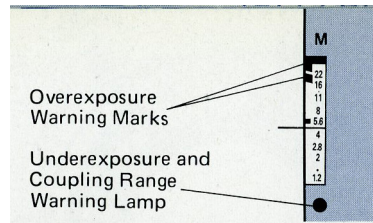
### Set the Film Speed

Hold the camera with the lens cap removed. Turn the film speed dial around the shutter dial and rotate it in either direction until the proper number is aligned with the green mark.



### Light Meter

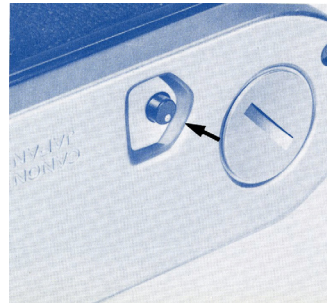
First set the shutter speed to the desired setting. *TIP: For hand-held shots your shutter speed should be set to 125 or higher.* Then use the release button while looking through the viewfinder. The aperture setting indicated by the window on the lens is the setting indicated. The setting will vary depending on your shutter speed and lighting conditions.



Meter

### Rewinding the Film

When the frame counter reaches the end of the roll, you have reached the end of the roll. You have to rewind the film. Press the small black rewind button on the side of the camera and turn it in the direction of the arrow. When the frame counter has reached the "S" mark you should stop. Then pull up the rewind crank and open the camera back.



Rewind Button

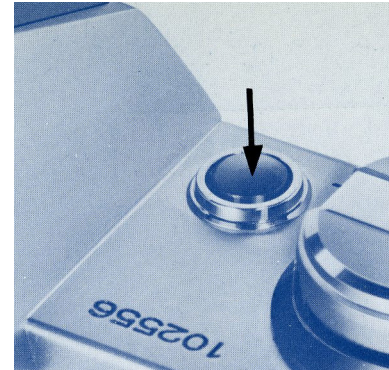
# Getting started with the Canon AE-1

The Very Very Short Version.

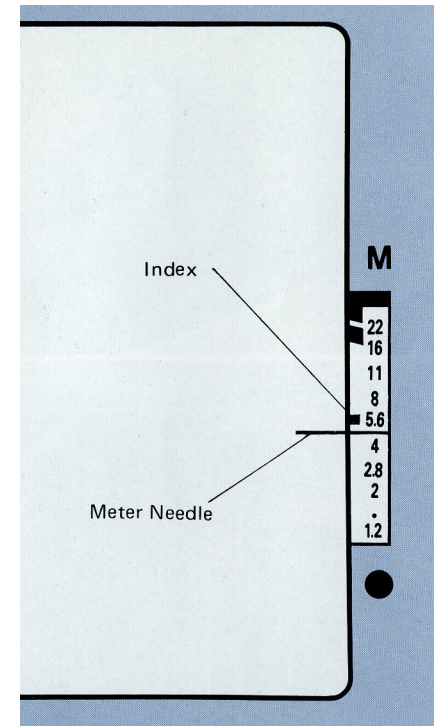
### Check the Battery

Whenever you check out one of our cameras you should verify that the battery level is good.

The battery level is checked by pressing the battery check button on the top of the camera while watching the meter needle in the viewfinder. The meter needle will point to the "M" mark on the scale. If the needle points to the "M" mark, the battery is good. If the needle points to the "L" mark, the battery is low and should be replaced.



Battery check button



Meter needle as seen in viewfinder

